

MODEL TC908 ASPIRE

INSTRUCTION MANUAL

Please thoroughly review Instruction Manual carefully before operating your new compressor.



CE ROHS

1. Features:

1. Air pressure gauge, air filter, pressure adjustable.
2. Piston type; oil-less compressor
3. Immediate pressure with continuous air flow
4. Auto start and auto stop function.
5. Thermal protection
6. Low noise, 62db.

2. Application Field:

Airbrush compressor TC908, together with airbrush, can be widely used in craftwork spraying, cosmetics, tattoo, tanning, hobbies/models, fingernail painting. It can be also used for providing air source for medical, environment protect, breed aquatics Industrial, food Industrial, chemical industrial, laboratory and so on.

3. Specification:

Type: Single Cylinder Piston Compressor

Power: 1/6 HP

Speed: 1700 r.p.m

Air output per min./liters: 20~23L/min

Auto stop, start at 3bar (43 psi), stop at 4bar (57 psi)

Working pressure: 0~4 bar

Weight: 7.93 Lbs. 3.6 kgs.

Suitable for airbrush with nozzle 0.2MM~1.0MM.

4. Operation directory:

1. The TC908 air compressor has a 1/8" BSP outlet with an attached 1/4" NPSM adaptor.
2. Attach airbrush to air hose; connect the air hose to the air compressor, plug into power supply. To start compressor, press power switch on top of compressor to "on".
3. Check for air leaks. If the compressor frequently starts and stops there may be an air leak at one of the connections. Be sure airbrush to air hose and air hose to air compressor connections are firmly tightened. The use of PTFE tape on the connections will help prevent leakage.
4. There is a difference between maximum pressure and working pressure. A compressor's maximum pressure is the highest pressure it can produce. When an airbrush is connected to the compressor and activated, the compressed air initially released through the airbrush nozzle is the maximum pressure. In contrast, the working pressure is the constant pressure the compressor will maintain while airbrushing. The level of the working pressure depends on the diameter of the airbrush nozzle; the larger the nozzle, the greater the amount of air released, which will lower the compressor's working pressure.

*****NOTE:** The factory setting for all pressure regulators is such that the pressure adjusting knob is fully tightened (**Max PSI**); if a lower working pressure is desired, begin turning the pressure adjusting knob **counterclockwise** until the needle located on the pressure gauge has reached the desired pressure. It may take **several counterclockwise** turns before the pressure gauge reading begins to change. *******

5. Notice:

1. Always choose the appropriate air compressor with suitable air flow and pressure according to the actual working requirement.
2. Before connecting the compressor, check that the voltage is in compliance with the electrical requirements of the compressor motor.
3. Please follow local electrical regulations and safety precautions. If socket/adapter is used it must be grounded.
4. Never leave the compressor exposed to excessive dust, acids, vapors, explosive or flammable gasses or atmospheric agents (rain, sun, fog, snow).
5. The compressor must be used in suitable environments, well-ventilated with an ambient temperature between 41 degrees F (5 C) and 104 degrees F (40 C)
6. Never use the compressor when bare foot; avoid contact with wet hands or feet.
7. Never allow children to touch the compressor while unit is in operation. Do not place any foreign objects in the compressor which may cause burns or electric shock.
8. Make sure you store the compressor in well ventilated and dry place.

6. Warranty (Continental U.S.A.)

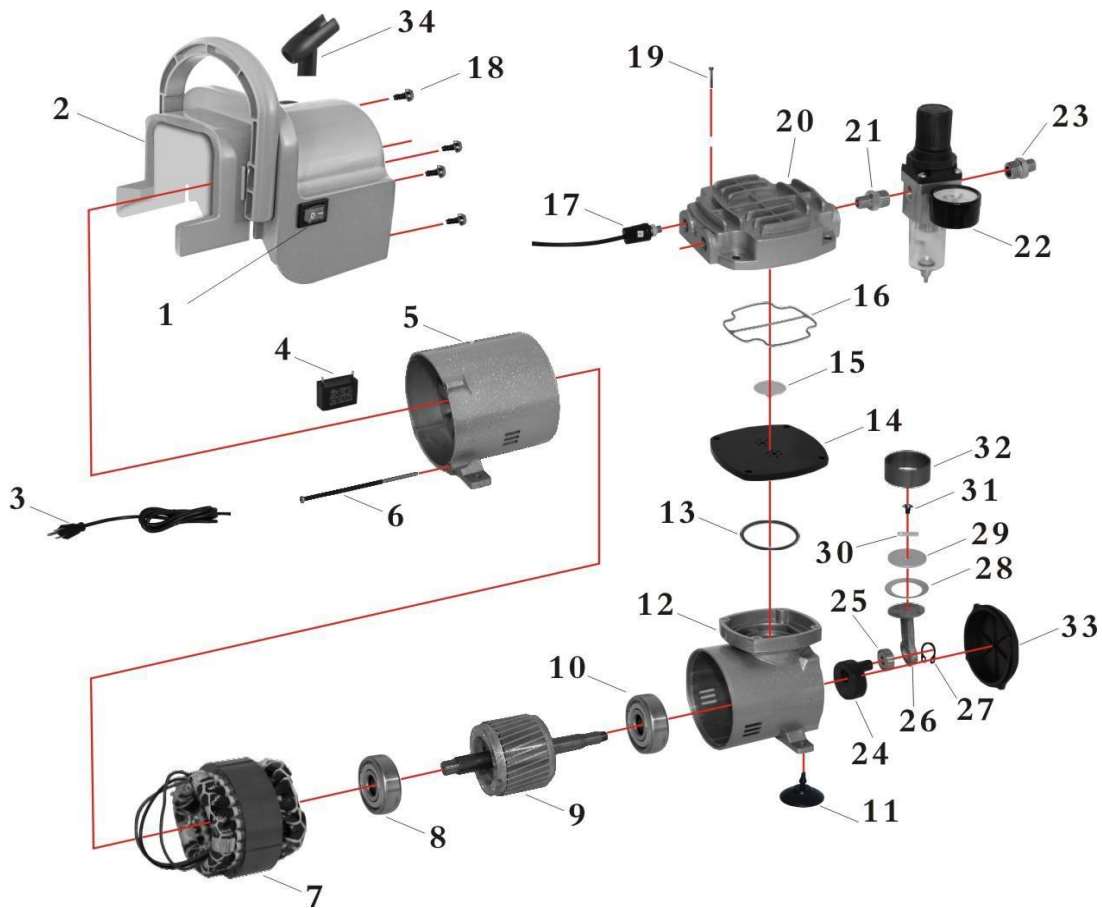
Your BADGER AIR-BRUSH CO. compressor is warranted from defects in material and workmanship for a period of one (1) year from date of purchase.

A compressor failing within the warranty period due to defects in material and/or workmanship will be repaired or replaced (at Badger's discretion) without charge to the purchaser when returned with proof of purchase to BADGER AIR-BRUSH CO. Transportation to Badger is pre-paid by purchaser.

This warranty excludes compressors which have been subjected to corrosion, negligence, accident, or units which have been altered or abused in any way. All Badger products have a lifetime labor warranty.

**BADGER AIR-BRUSH CO.
9128 BELMONT AVE.
FRANKLIN PARK, IL 60131**

7. Spare parts list:



PARTS LIST

INDEX #	PART #	DESCRIPTION	QTY.	INDEX #	PART #	DESCRIPTION	QTY.
1	TC908N-1	POWER SWITCH	1	18	TC908N-18	SCREW	4
2	TC908N-2	PLASTIC HOUSING	1	19	TC908N-19	SCREW	4
3	TC908N-3	WIRE	1	20	TC908N-20	CYLINDER HEAD	1
4	TC908N-4	CONDENSER	1	21	TC908N-21	CONNECTOR	1
5	TC908N-5	REAR BODY	1	22	TC908N-22	FILTER VALVE	1
6	TC908N-6	SCREW	4	23	TC908N-23	CONNECTOR	1
7	TC908N-7	STATIONARY MOTOR	1	24	TC908N-24	COUNTERWEIGHT	1
8	TC908N-8	BEARING	1	25	TC908N-25	BEARING	1
9	TC908N-9	ROTARY MOTOR	1	26	TC908N-26	LINK	1
10	TC908N-10	BEARING	1	27	TC908N-27	SNAP RING	1
11	TC908N-11	RUBBER PAD	4	28	TC908N-28	COMPRESSION RING	1
12	TC908N-12	FRONT BODY	1	29	TC908N-29	BLOCK	1
13	TC908N-13	O-RING	1	30	TC908N-30	VALVE PLATE	1
14	TC908N-14	CYLINDER BLOCK	1	31	TC908N-31	SCREW	1
15	TC908N-15	O-RING	1	32	TC908N-32	CYLINDER HEAD	1
16	TC908N-16	O-RING	1	33	TC908N-33	FRONT COVER	1
17	TC908N-17	PRESSURE SWITCH	1	34	TC908N-34	AIRBRUSH HOLDER	1